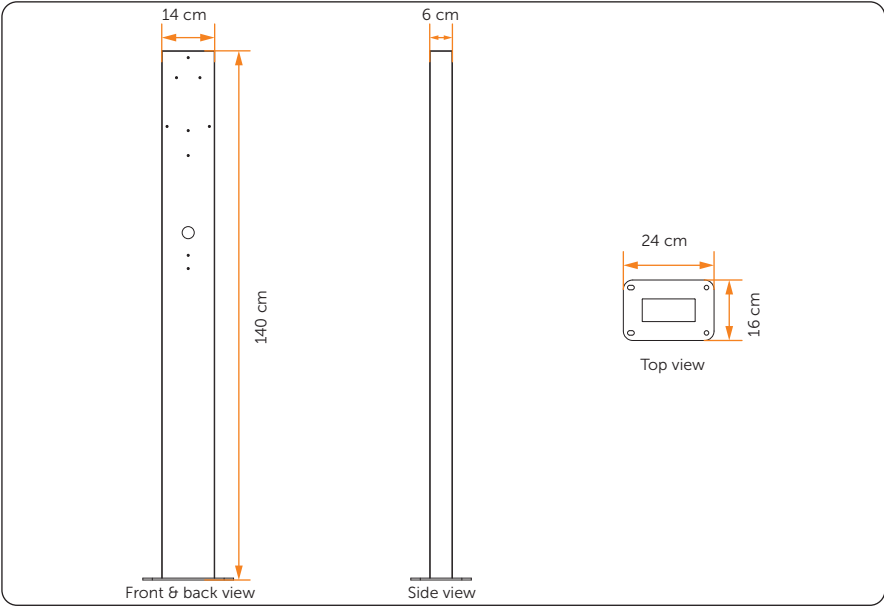


Quick Installation Guide

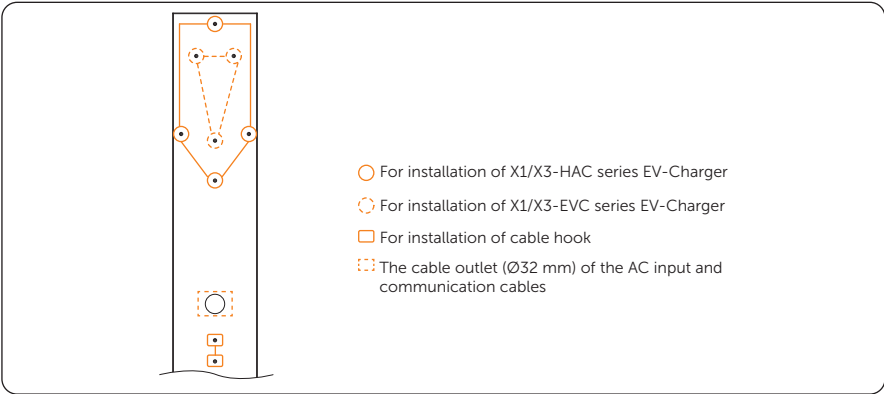
EVC Pedestal Dual

1 Introduction

EVC Pedestal Dual can be installed with EV-Charger and facilitate the installation work. The pedestal must be installed on a hard surface (Concrete surface is recommended), it can also be mounted on a solid ground.



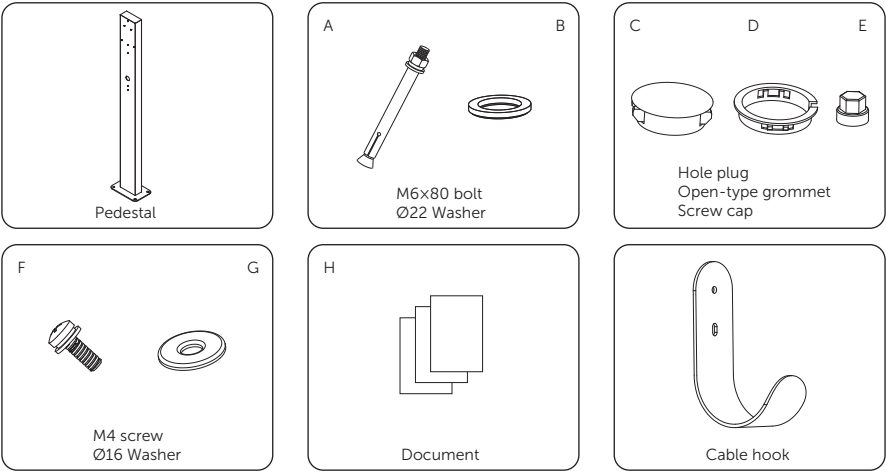
It can be compatible with the X1/X3-HAC and X1/X3-EVC series smart EV-Charger manufactured by SolaX. Please refer to below figure for details.



2 Preparation

2.1 Packing List Checking

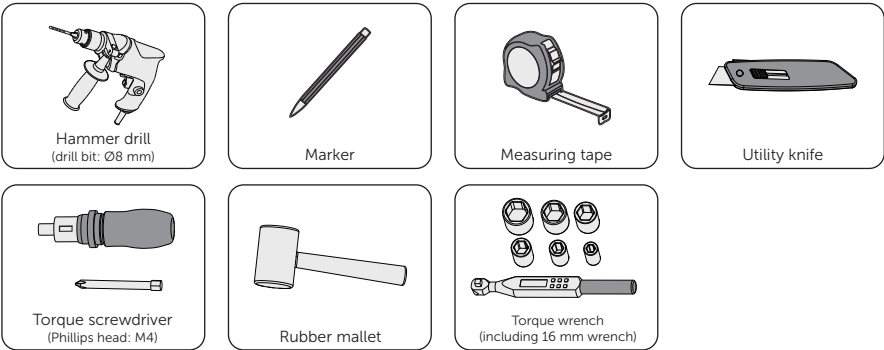
Before installation, make sure nothing inside the package is damaged. The following items should be inside the package.



Item	Description	Quantity	Remark
/	Pedestal	1	
A	M6x80 bolt	4	For fixing the pedestal on the ground
B	Ø22 Washer	4	For use with the M6x80 bolt only
C	Hole plug	1	For sealing the unused cable outlet
D	Open-type grommet	2	For protection of cables through the cable outlet
E	Screw cap	4	For use with the M6x80 bolt
F	M4 screw	12	For securing the EV-Charger and cable hook
G	Ø16 Washer	12	For use with the M4 screw only
H	Document	/	
/	Cable hook	2	

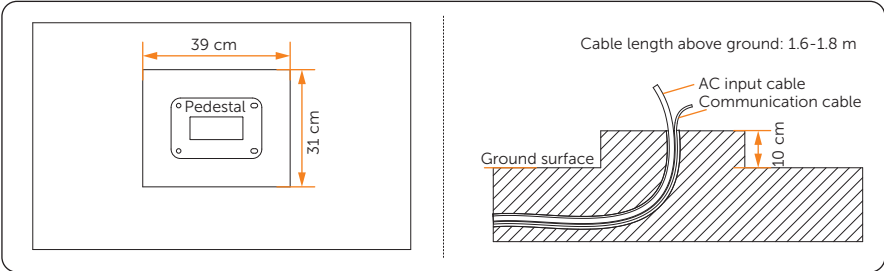
2.2 Tools Preparation

Installation tools include but are not limited to the following recommended ones. If necessary, use other auxiliary tools on site.



2.3 Site Preparation

Select a place suitable for the installation of the pedestal and reserve enough space as shown below. Bury the AC input cable(s) and communication cable(s) before the installation of the pedestal with a length above the ground of about 1.6-1.8 m.

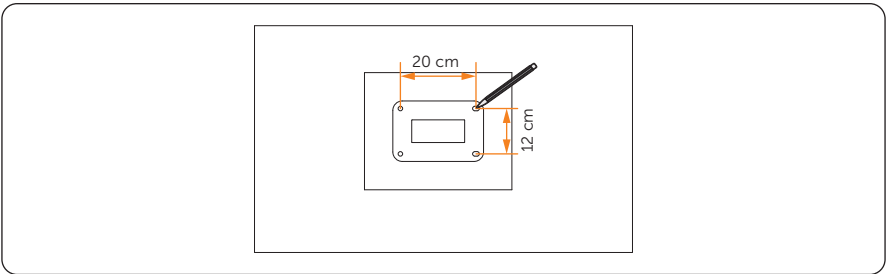


2.4 Others

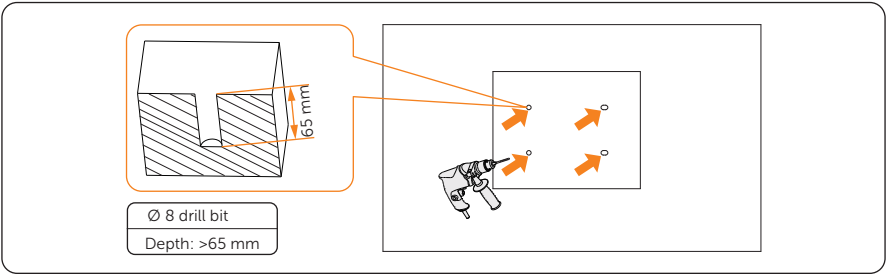
Prepare and read the document(s) of the EV-Charger in advance.

3 Installation Steps

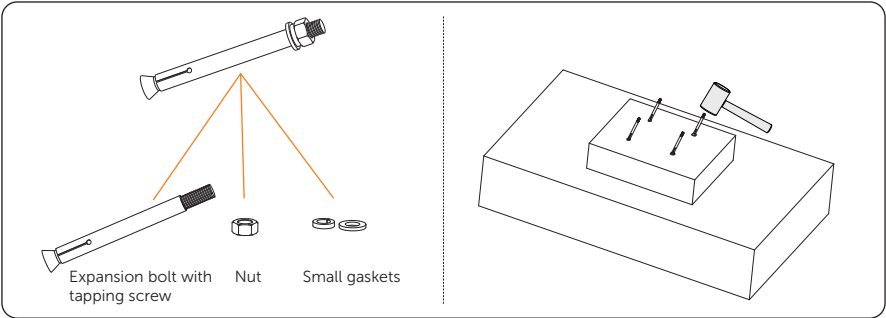
Step 1: Mark the positions of the four holes using the holes at the base of the pedestal as a template.



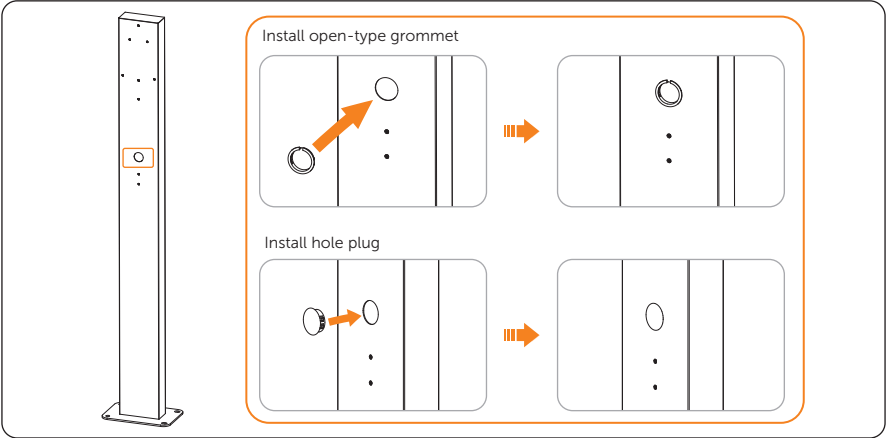
Step 2: Remove the pedestal and drill holes at the marked positions using a Ø8 drill with a depth of at least 65 mm.



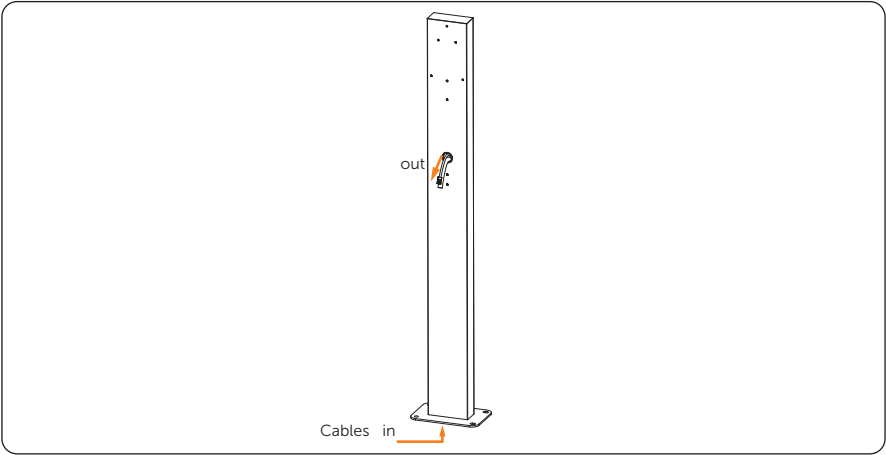
Step 3: Find the M6x80 bolts and disassemble as following. Then insert the expansion bolts with tapping screws into the drilled holes and secure the bolts with a rubber mallet.



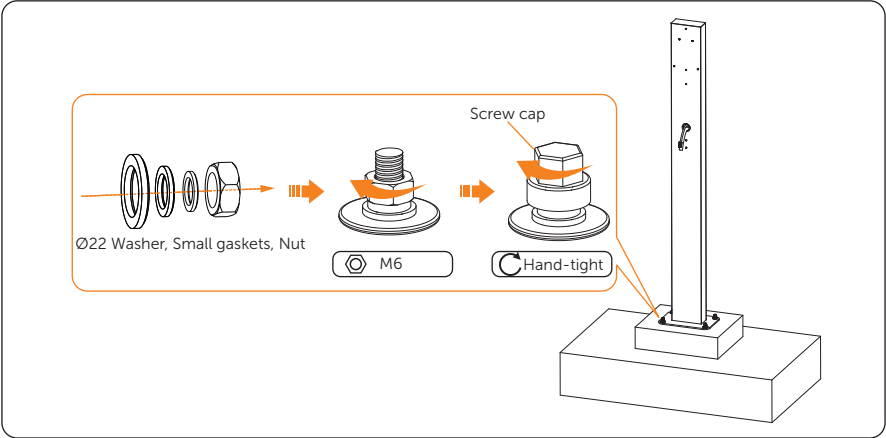
Step 4: Install the open-type grommet(s) on the cable outlet(s) of the pedestal by hands based on actual needs. If only one side is to be installed with an EV-Charger, install the hole plug on the other side.



Step 5: Thread the AC input cable and communication cable(s) through the pedestal. The cables should go into the pedestal from the bottom and come out of it from the cable outlet.

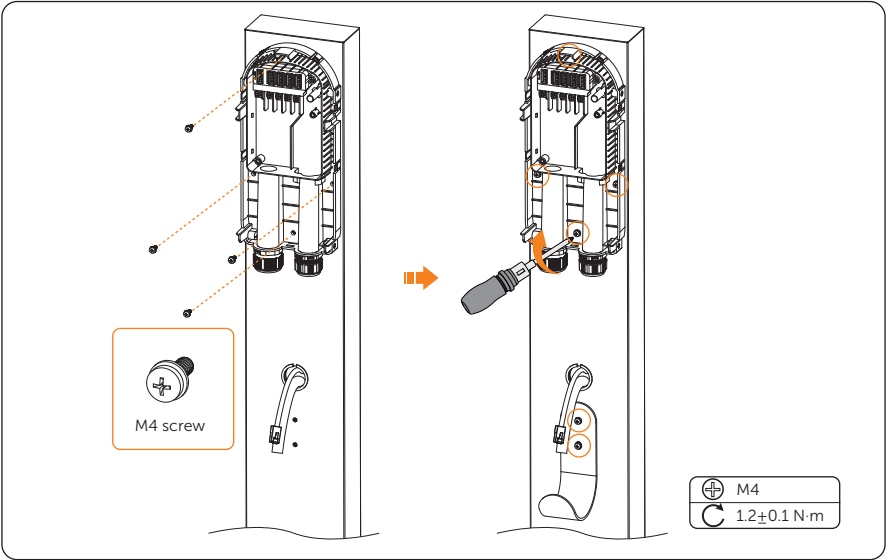


Step 6: Fix the pedestal with the Ø22 washers, nuts and small gaskets using the torque wrench. Then put the screw caps on the well-secured bolts and tighten them with hands.

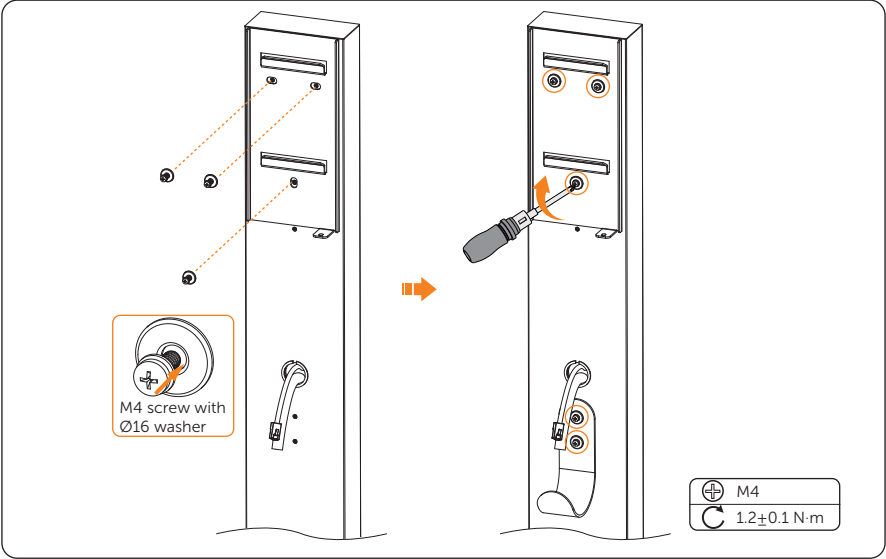


Step 7: Fix the base plate of X1/X3-HAC series EV-Charger or the back bracket of the X1/X3-EVC series EV-Charger and the cable hook on the pedestal with the M4 screws (and Ø16 washers) from the accessory bag of the pedestal instead of the ones of the EV-Charger. For the installation of the EV-Charger, please refer to the corresponding manual or installation guide.

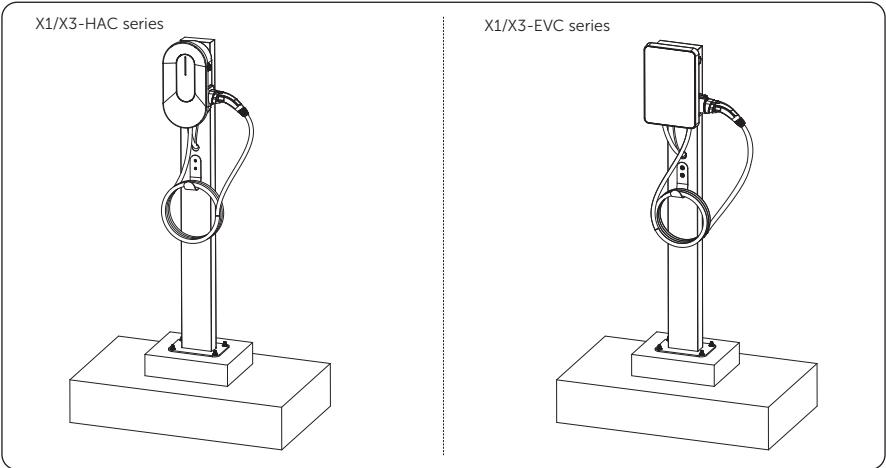
- For X1/X3-HAC series



- For X1/X3-EVC series



Step 8: Once the installation is completed, plug the connector into the charging connector base of the EV-Charger and hang the cable on the cable hook.



As shown in the figure below, both sides of the EVC Pedestal can be fitted with Rain Shelters (optional) and EV-Charger. The X1/X3-HAC and X1/X3-EVC series are compatible.

